



THE REPUBLIC OF LIBERIA
LIBERIA MARITIME AUTHORITY

8619 Westwood Center Drive
Suite 300
Vienna, Virginia 22182, USA
Tel: +1 703 790 3434
Fax: +1 703 790 5655
Email: security@liscr.com
Web: www.liscr.com

25 September 2017

Marine Security Advisory: 06/2017

Subject: Combined Maritime Forces - Maritime Security Transit Corridor

Dear Shipowner/Operator/Master of Liberian flagged vessels;

Recent attacks against merchant shipping in the Gulf of Aden and Bab Al Mandeb have highlighted the risks associated with transiting these waters. The multiple types of risks and the broad expanse of ocean on which these attacks can occur dictate that Naval Forces must be used in the most efficient manner possible. To assist in this, the Combined Maritime Forces (CMF) has established a Maritime Security Transit Corridor (MSTC). Guidance on the MSTC is attached.

The MSTC will consist of:

- The Internationally Recommended Transit Corridor (IRTC)
- The BAM TSS and the TSS West of the Hanish Islands
- A two-way route directly connecting the IRTC and the BAM TSS

The purpose of this corridor is to provide a recommended merchant traffic route around which Naval Forces can focus their presence and surveillance efforts.

The formation of the MSTC has no effect on the use or timings of Group Sails or escorted transits of the IRTC. These will continue to be scheduled and executed as they have in the past. The IRTC end points will remain existent.

It is recommended that all vessels use the MSTC to benefit from military presence and surveillance.

Operating in these waters requires thorough planning and the use of all available information. It is essential therefore, that Masters, Ship Security Officers and Company Security Officers carry out detailed Risk Assessments for each voyage to the region and for each activity within the region.

All vessels transiting the Gulf of Aden and Bab Al Mandeb should follow the guidance of BMP4 and consider the use of embarked armed security.

For more information please contact the Security Department at telephone + 1 703 790 3434, email security@liscr.com, LISCR Duty Officer + 1 703 963 6216, email dutyofficer@liscr.com.

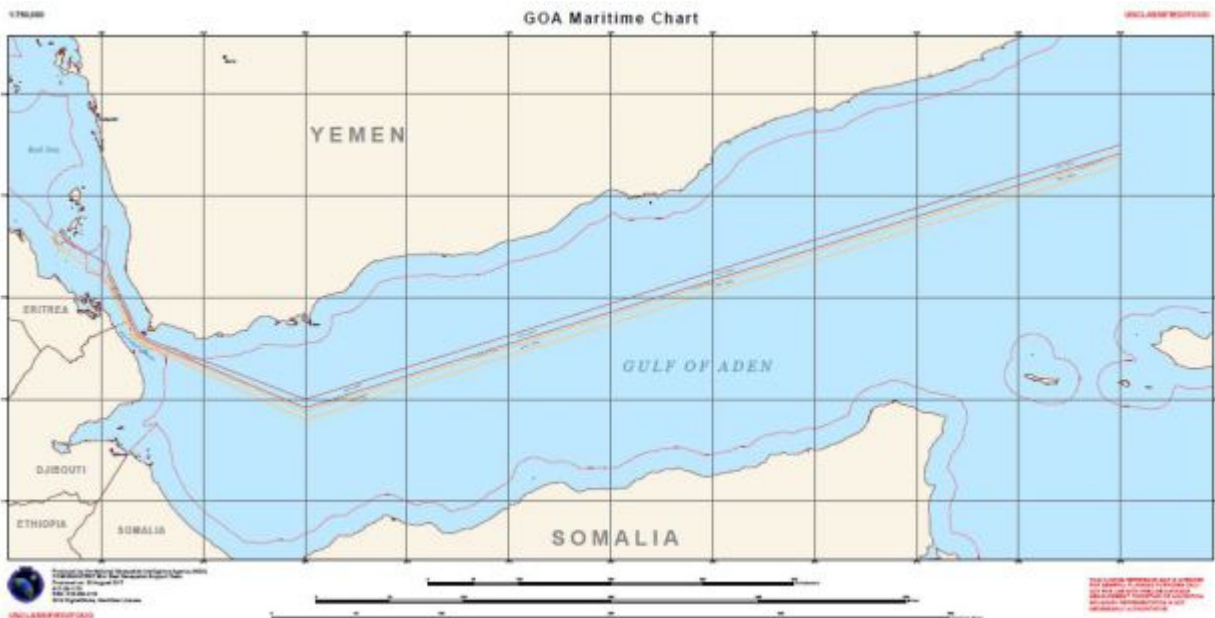
GUIDANCE ON MARITIME SECURITY TRANSIT CORRIDOR

The following information from the Combined Maritime Forces (CMF) relates to transits through the Gulf of Aden, Bab Al Mandeb (BaM), Southern Red Sea, and associated waters. It does not replace any previous guidance.

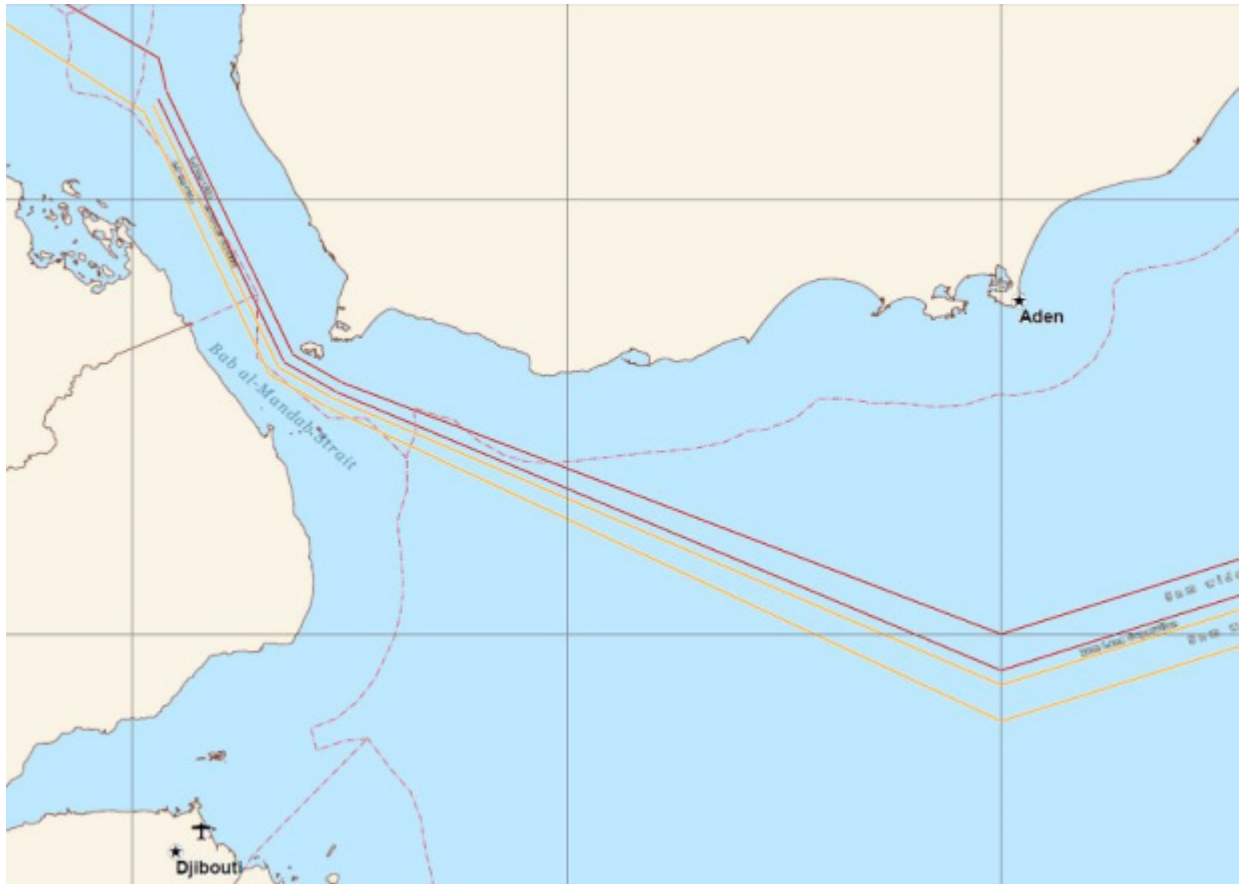
Recent attacks against merchant shipping in the Gulf of Aden and Bab Al Mandeb have highlighted the risks associated with transiting these waters. The multiple types of risks and the broad expanse of ocean on which these attacks can occur dictate that Naval Forces must be used in the most efficient manner possible. To assist in this, CMF is establishing a Maritime Security Transit Corridor (MSTC).

The MSTC will consist of:

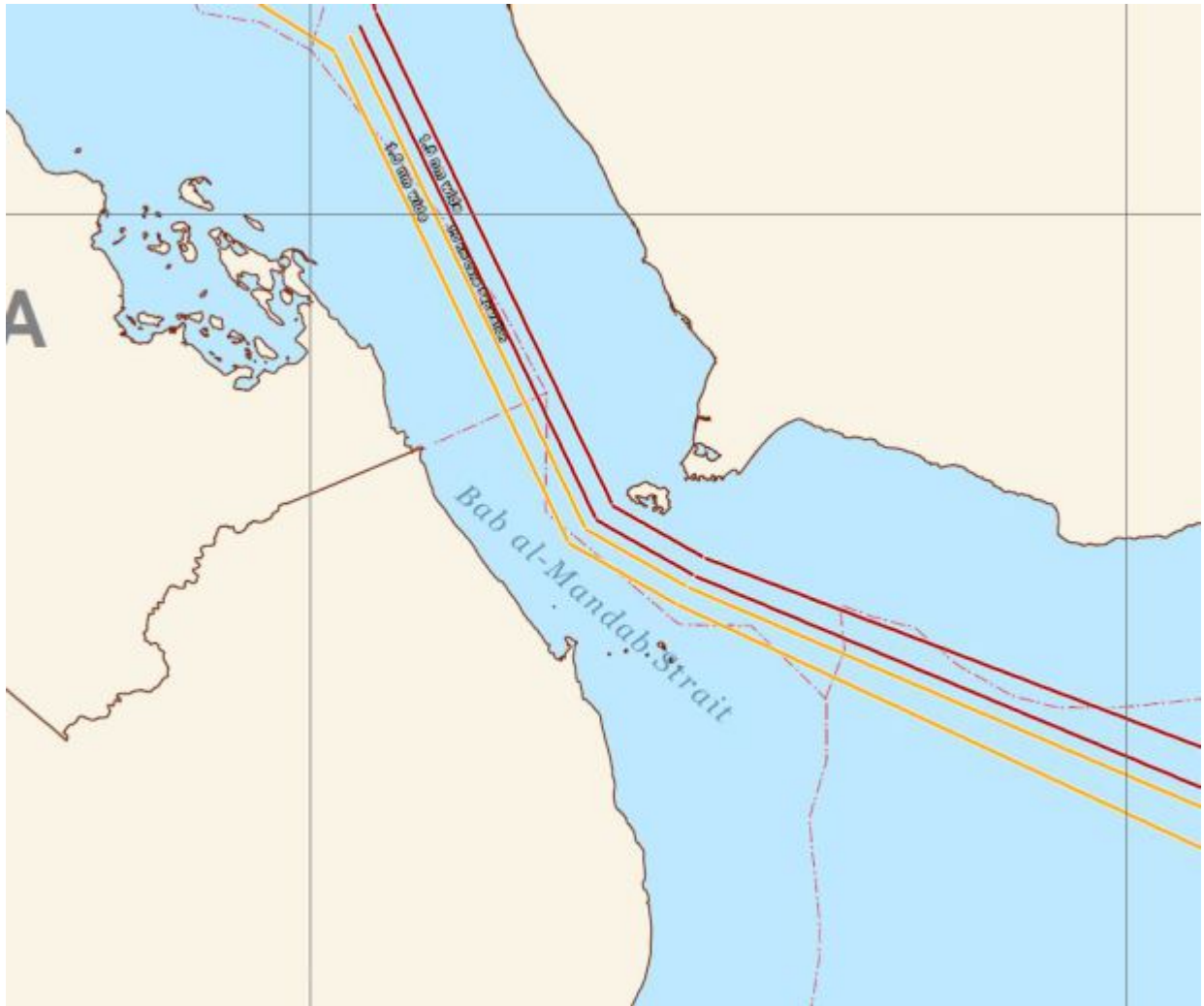
- The Internationally Recommended Transit Corridor (IRTC)
- The BAM Traffic Separation Scheme (TSS) and the TSS West of the Hanish Islands
- A two-way route directly connecting the IRTC and the BAM TSS



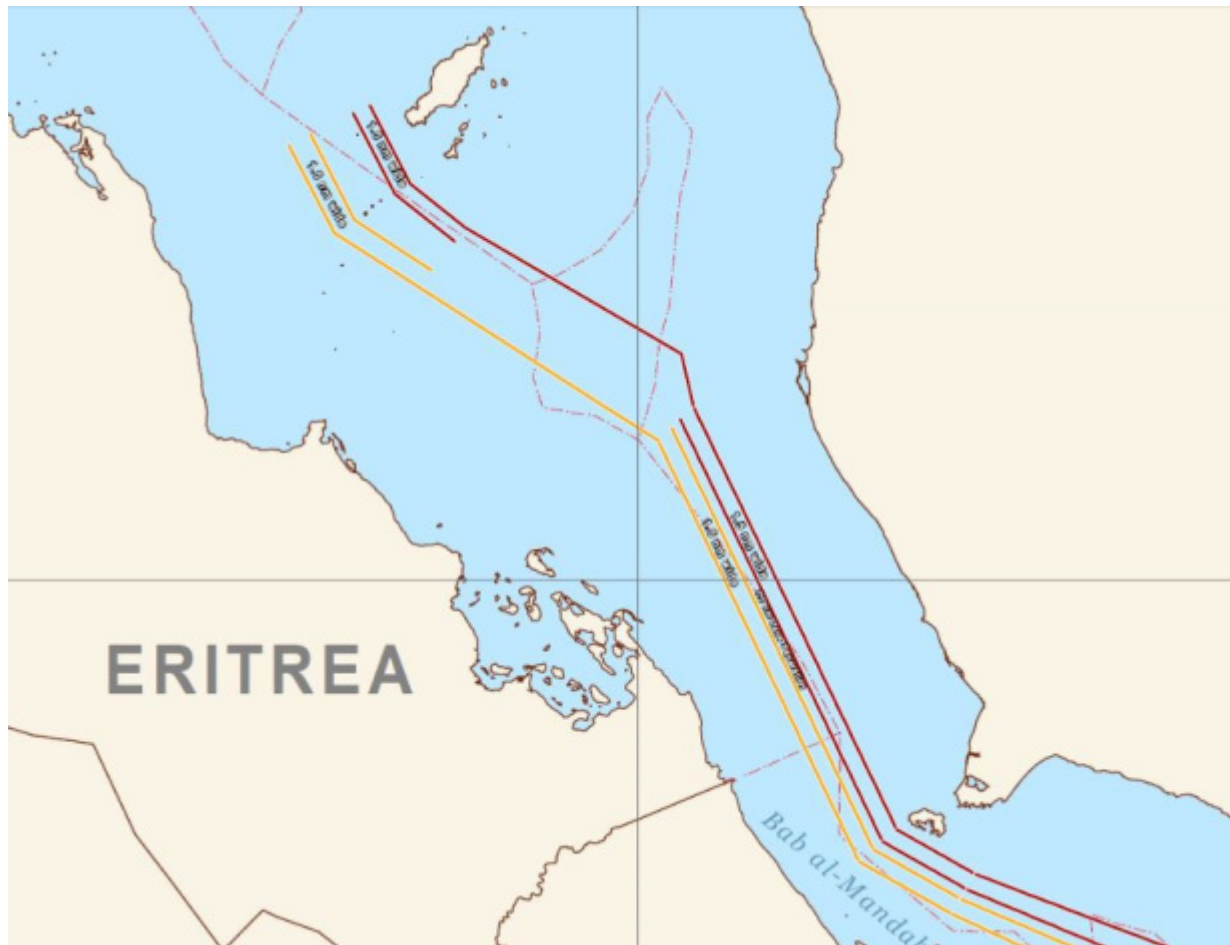
Overview of Maritime Security Transit Corridor (including Internationally Recommended Transit Corridor (IRTC))



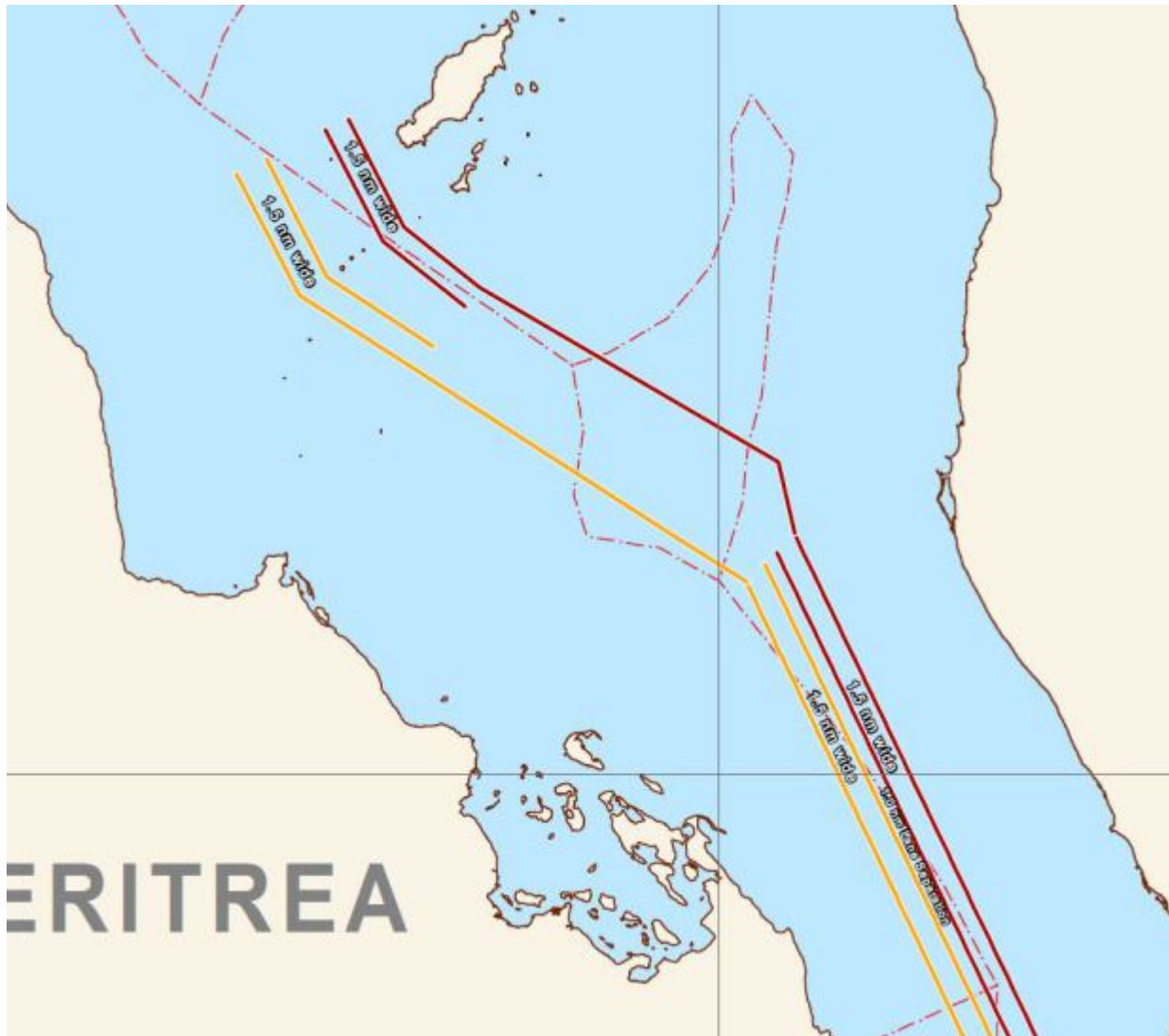
Two-way route directly connecting the IRTC and the BAM TSS



Enlarged image of two-way route directly connecting the IRTC and the BAM TSS



The BAM TSS and the TSS West of the Hanish Islands



Enlarged image of the BAM TSS and the TSS West of the Hanish Islands

When combined, these sections as a whole will be termed the MSTC. The purpose of this corridor is to provide a recommended merchant traffic route around which Naval Forces can focus their presence and surveillance efforts. It is recommended that all vessels use the MSTC to benefit from military presence and surveillance.

The formation of the MSTC has no effect on the use or timings of Group Sails or escorted transits of the IRTC. These will continue to be scheduled and executed as they have in the past. The IRTC end points will remain existent.

Operating in these waters requires thorough planning and the use of all available information. The maritime threat environment is dynamic; the risks will not remain constant for subsequent visits. It is essential therefore, that Masters, Ship Security Officers and Company Security Officers carry out detailed Risk Assessments for each voyage to the region and for each activity within the region.

All vessels transiting the Gulf of Aden and Bab Al Mandeb should follow the guidance of BMP4 to the maximum extent possible and consider the use of embarked armed security. Recent piracy attacks in 2017 serve to emphasise the importance of robustly following this guidance.

This guidance is in no way directive. The use of the IRTC, MSTC, BMP4, armed security, shifting transit times, or any other defensive measures remain the sole decision of the vessel operator based on its own dedicated risk assessment and the requirements of the flag state.

* * * * *